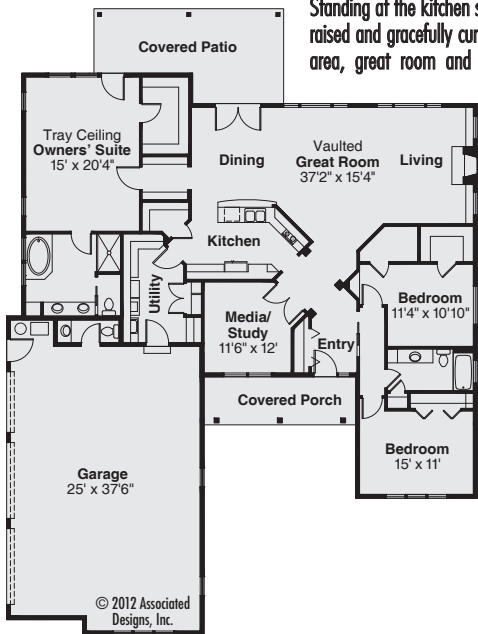




Standing at the kitchen sink, you can look out across a raised and gracefully curved eating bar, into the dining area, great room and patio. Gridded windows, set high, flank the living room's masonry fireplace, while shelves fill the spaces below them. The utility room and a well-appointed owners' suite fill the left wing; two more bedrooms are on the right. For more details, log onto [www.Home-Plan-Weekly.com](http://www.Home-Plan-Weekly.com), or call 1-800-634-0123.



## Hills Creek PLAN 10-573

Living Area  
2370 sq.ft.

2000 SERIES