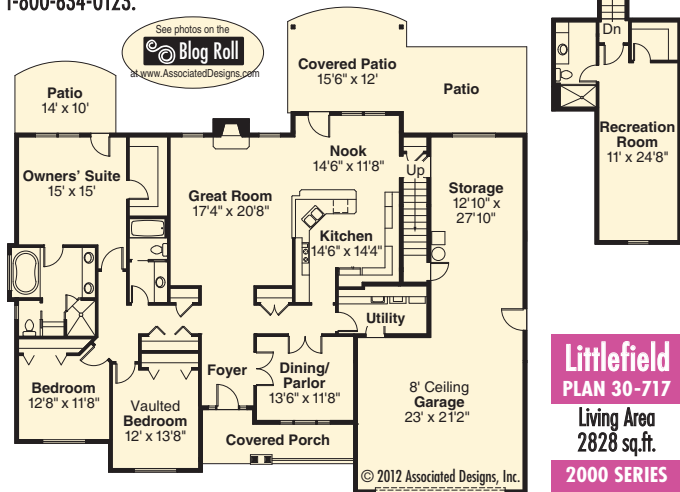


Intriguing Dufferin stone veneer covers much of this European-style home's front facade. A richly windowed gathering space comprises the great room, kitchen and nook. The great room's fireplace can be enjoyed from the visually open kitchen. A recreation room, bathroom and walk-in storage closet are upstairs, over the garage. For more details, log onto www.Home-Plan-Weekly.com, or call 1-800-634-0123.



Littlefield
PLAN 30-717

Living Area
2828 sq.ft.

2000 SERIES