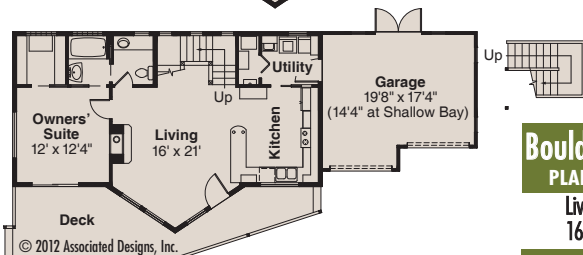
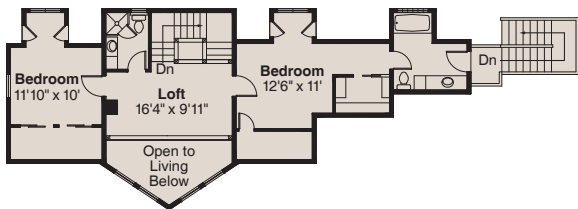




An abundance of natural light washes into this roomy cabin through a four-high stack of windows in its central A-frame. The living room's vaulted ceiling soars two stories high near the windows. Its spacious living area is open to the kitchen, across a long peninsular eating counter. Two bedrooms, two bathrooms and a wide loft are upstairs. For more details, log onto www.Home-Plan-Weekly.com, or call 1-800-634-0123.



Boulder Creek
PLAN 30-814

Living Area
1680 sq.ft.

1000 SERIES