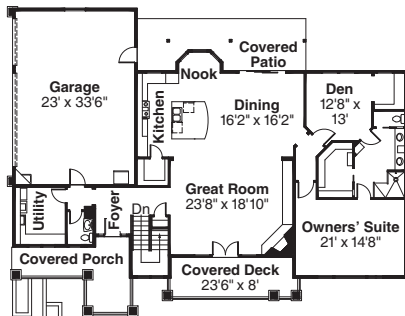




This spacious prairie-style home is designed for construction on land that slopes up at the rear. On the main (upper) floor, a large great room with a fireplace is completely open to an even larger room that comprises the dining room and kitchen. The owners' suite is on the main floor, and more bedrooms are below. Both levels have covered decks and/or patios. For more details, log onto [www.Home-Plan-Weekly.com](http://www.Home-Plan-Weekly.com), or call 1-800-634-0123.



## Northshire PLAN 30-808

Living Area  
3867 sq.ft.

3000 SERIES

